
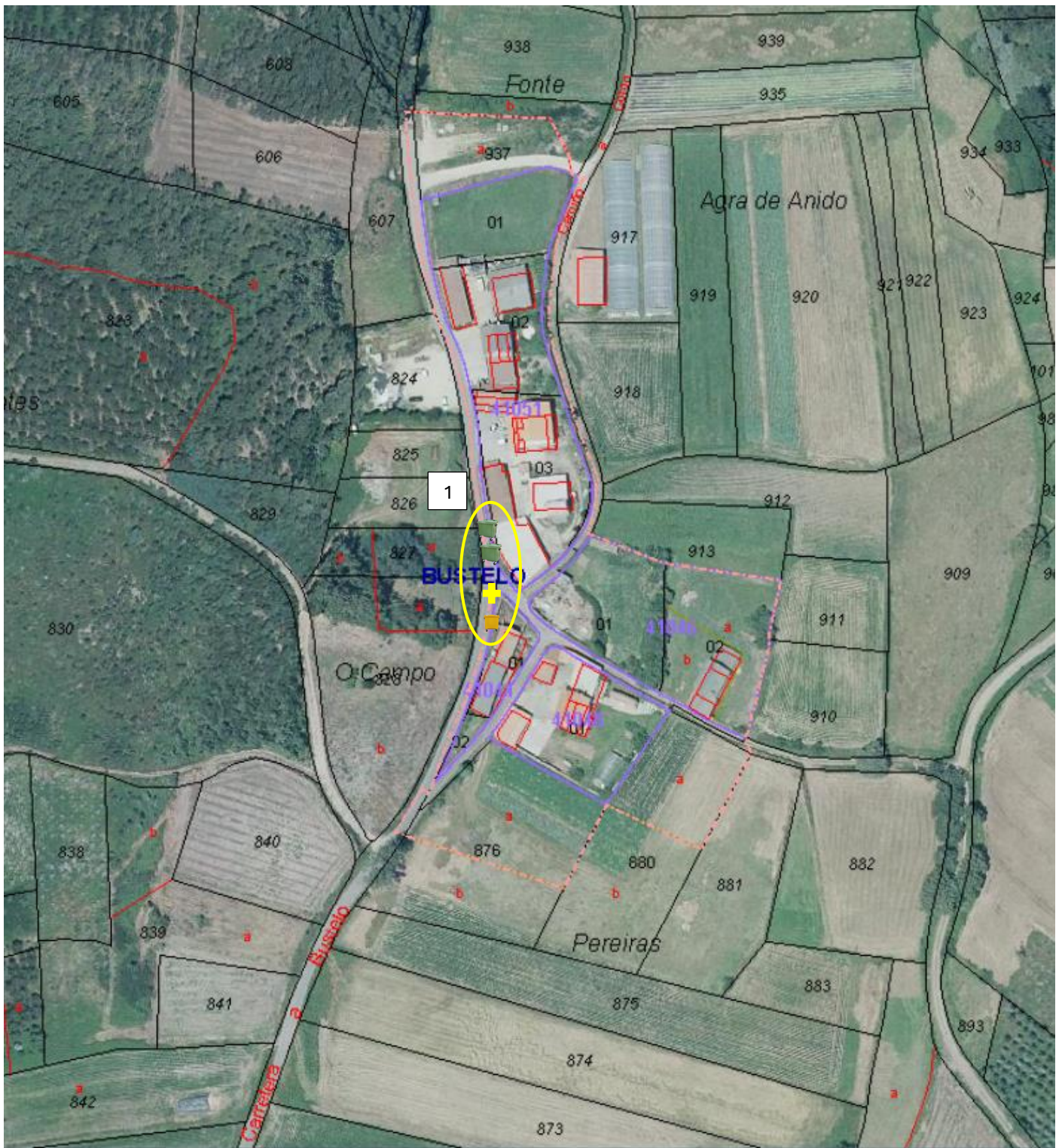






SITUACIÓN ACTUAL

| SITUACIÓN | LIXO DOMÉSTICO  | PLÁSTICOS E ENVASES METÁLICOS  | VIDRO  | PAPEL E CARTÓN  |
|-----------|---|--|---|---|
| 1 | 2 CONTEDORES | | | |



SITUACIÓN PROPOSTA

| SITUACIÓN | LIXO DOMÉSTICO  | PLÁSTICOS E ENVASES METÁLICOS  | VIDRO  | PAPEL E CARTÓN  |
|-----------|---|--|---|---|
| 1 | 2 CONTEDORES | + AÑADIR 1 CONTEADOR | | |